



The Global Language of Business

# Transport Pick up Drop off Request and Confirmation Business Message Standard (BMS)

*Release 3.3, Ratified, Mar 2017*



## Document Summary

Document Item	Current Value
Document Name	GS1 Document Name Business Message Standard (BMS)
Document Date	Mar 2017
Document Version	3.3
Document Issue	1
Document Status	Ratified

## Work Request Reference

Date of WR Submission to GSMP:	WR Submitter(s):	Refer to Work Request (WR) Number(s):
02-Jul-2012	GS1 Germany	12-000195
25-Jun-2014	GS1 Global Office	14-000110

## Business Requirements Document (BRAD) Reference

BRAD Title	BRAD Issue Date	BRAD Version
Transport Management		1.0

## Document Change History

Date of Change	Version	Changed By	Reason for Change	Summary of Change
12-Jan-2012	BMS 3.0 – Issue 1	Mark Van Eeghem	BMS Release 3.0	See summary of changes
01-May-2013	BMS 3.1 – Issue 1	Coen Janssen	BMS Release 3.1	See summary of changes
15-Sep-2014	BMS 3.2 – Issue 1	Ewa Iwicka	BMS Release 3.2	See summary of changes
01-Mar-2017	BMS 3.3 – Issue 1	Ewa Iwicka	BMS Release 3.3	See summary of changes

## Disclaimer

GS1®, under its IP Policy, seeks to avoid uncertainty regarding intellectual property claims by requiring the participants in the Work Group that developed this **Transport Pick up Drop off Request and Confirmation Business Message Standard (BMS)** to agree to grant to GS1 members a royalty-free licence or a RAND licence to Necessary Claims, as that term is defined in the GS1 IP Policy. Furthermore, attention is drawn to the possibility that an implementation of one or more features of this Specification may be the subject of a patent or other intellectual property right that does not involve a Necessary Claim. Any such patent or other intellectual property right is not subject to the licencing obligations of GS1. Moreover, the agreement to grant licences provided under the GS1 IP Policy does not include IP rights and any claims of third parties who were not participants in the Work Group.

Accordingly, GS1 recommends that any organization developing an implementation designed to be in conformance with this Specification should determine whether there are any patents that may encompass a specific implementation that the organisation is developing in compliance with the Specification and whether a licence under a patent or other intellectual



property right is needed. Such a determination of a need for licencing should be made in view of the details of the specific system designed by the organisation in consultation with their own patent counsel.

THIS DOCUMENT IS PROVIDED "AS IS" WITH NO WARRANTIES WHATSOEVER, INCLUDING ANY WARRANTY OF MERCHANTABILITY, NONINFRINGEMENT, FITNESS FOR PARTICULAR PURPOSE, OR ANY WARRANTY OTHERWISE ARISING OUT OF THIS SPECIFICATION. GS1 disclaims all liability for any damages arising from use or misuse of this Standard, whether special, indirect, consequential, or compensatory damages, and including liability for infringement of any intellectual property rights, relating to use of information in or reliance upon this document.

GS1 retains the right to make changes to this document at any time, without notice. GS1 makes no warranty for the use of this document and assumes no responsibility for any errors which may appear in the document, nor does it make a commitment to update the information contained herein.

GS1 and the GS1 logo are registered trademarks of GS1 AISBL.

# Table of Contents

<b>1</b>	<b>Business Domain View .....</b>	<b>5</b>
1.1	Introduction .....	5
1.2	References .....	5
<b>2</b>	<b>Business Context .....</b>	<b>5</b>
<b>3</b>	<b>Business Transaction View .....</b>	<b>6</b>
3.1	Business Transaction – Request Transport Pick-up / Drop-off.....	6
3.2	Confirm Transport Pick-up / Drop-off.....	7
<b>4</b>	<b>Business Information View .....</b>	<b>9</b>
4.1	Transport Pick Up Drop Off Request (message) .....	9
4.2	Transport Pick Up Drop Off Confirmation (message) .....	12
4.3	Transport Pick Up Drop Off Consignment.....	15
4.4	Transport Pick Up Drop Off Shipment.....	17
4.5	Enumerations (message specific) .....	20
4.5.1	TransportAppointmentTypeEnumeration .....	20
4.5.2	TransportAppointmentStatusEnumeration .....	20
4.6	Code Lists .....	20
<b>5</b>	<b>Business Message Examples .....</b>	<b>21</b>
5.1	Example 1 .....	21
5.2	Example 2 .....	23
<b>6</b>	<b>Implementation Considerations.....</b>	<b>23</b>
6.1	User Guide .....	23
6.2	Message Specific Considerations .....	24
<b>7</b>	<b>Summary of Changes .....</b>	<b>24</b>
7.1	BMS Release 3.0 .....	24
7.2	BMS Release 3.1 .....	24
7.3	BMS Release 3.2 .....	24
7.4	BMS Release 3.3 .....	26
<b>8</b>	<b>Appendices .....</b>	<b>29</b>
<b>9</b>	<b>Acknowledgements.....</b>	<b>29</b>
9.1.1	Work Group .....	29
9.1.2	Development Team Members .....	31

# 1 Business Domain View

## 1.1 Introduction

### Message Definition

#### Transport Pick-up/Drop-off Request Message Definition

Transport Pick-up message enables the request for an appointment to collect goods at a pick-up location or to deliver goods at a drop-off location.

#### Transport Pick-up/Drop-off Confirmation Message Definition

This business message enables the confirmation for an appointment to collect goods at a pick-up location or to deliver goods at a drop-off location.

### Principles

Initial information about the collection and delivery of goods may already have been exchanged in the transport instruction. However, the party where the goods are collected (consignor / pick-up location / shipper / ship-from location) or delivered (consignee / drop-off location / receiver / ship-to location) will not in all cases be aware of the transport instruction details or they might have changed.

In the pick-up / drop-off request the carrier can specify delays or other relevant status information that might impact the time of collection or the time of delivery.

In the pick-up / drop-off confirmation besides the detailed time and location (dock door) additional handling instructions might be included.

## 1.2 References

Reference Name
BRAD Transport Management (GS1, 2009)
Logistics Interoperability Model (GS1, 2007)
BMS eCom Common Library 3.3 (GS1, 2016)
BMS Shared Common Library 3.3 (GS1, 2016)

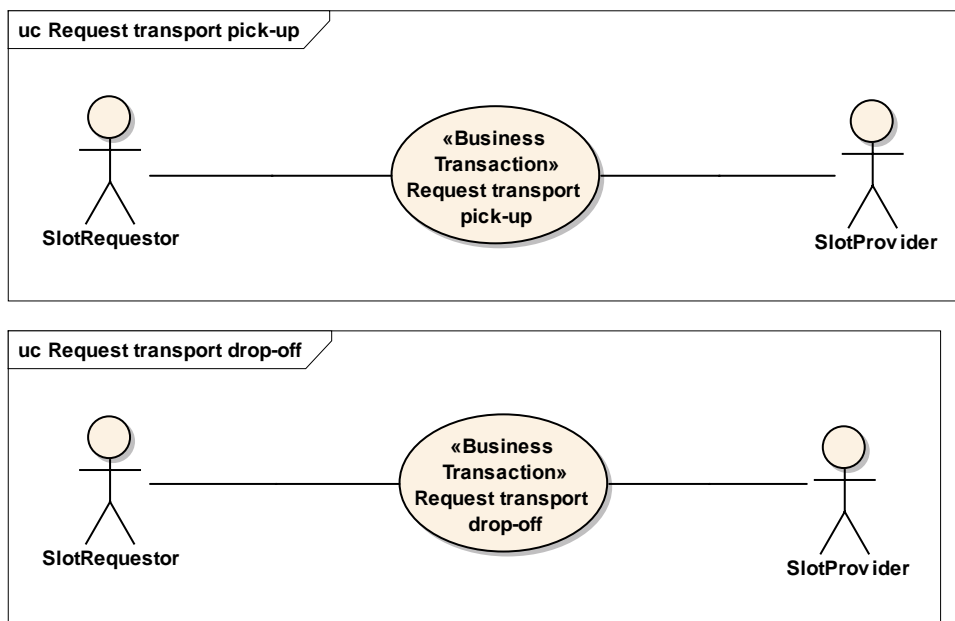
# 2 Business Context

Context Category	Value(s)
Industry	All
Geopolitical	All
Product	All
Process	Deliver / Transport Management
System Capabilities	GS1 System
Official Constraints	None

### 3 Business Transaction View

#### 3.1 Business Transaction – Request Transport Pick-up / Drop-off

##### Use Case Diagram



##### Use Case Description

Use Case ID	UC-1									
Use Case Name	Request Transport Pick-up / Drop-off									
Use Case Description	To request a slot (detailed time and location) for the collection or delivery of goods.									
Actors (Goal)	Slot Requestor (logistic service provider) Slot Provider (customer, supplier, consolidation centre, ...)									
Performance Goals	Not applicable									
Preconditions	The provider is aware that a shipment / consignment will need to be collected or delivered, based on previous information exchanges. The requestor is aware of the planned execution details for the transport, for example based on information exchanged in the transport instruction.									
Post conditions	The slot provider has received the request.									
Scenario	Begins when the slot requestor determines a specific appointment is required. Continues with... <table><tr><th>Step #</th><th>Actor</th><th>Activity Step</th></tr><tr><td>1</td><td>Requestor</td><td>Issues the transport pick-up drop-off request</td></tr><tr><td>2</td><td>Provider</td><td>Receives the transport pick-up drop-off request</td></tr></table> Ends when	Step #	Actor	Activity Step	1	Requestor	Issues the transport pick-up drop-off request	2	Provider	Receives the transport pick-up drop-off request
Step #	Actor	Activity Step								
1	Requestor	Issues the transport pick-up drop-off request								
2	Provider	Receives the transport pick-up drop-off request								
Alternative Scenario	Not applicable									
Related Requirements	Not applicable									

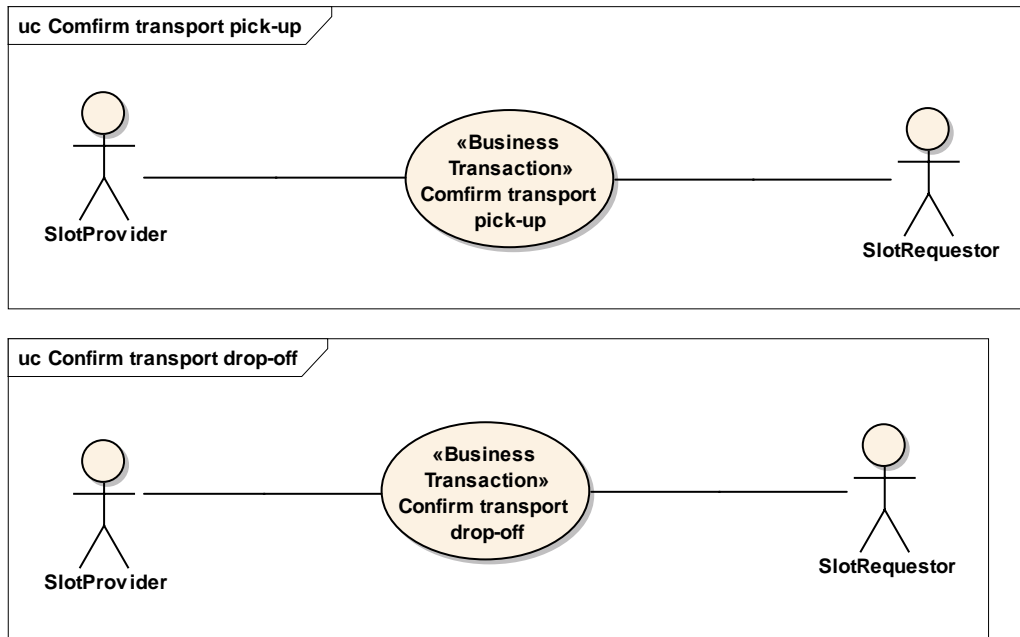
<b>Related Rules</b>	Not applicable
----------------------	----------------

### Activity Diagram(s)

Not applicable

## 3.2 Confirm Transport Pick-up / Drop-off

### Use Case Diagram



### Use Case Description

<b>Use Case ID</b>	UC-2
<b>Use Case Name</b>	Confirm Transport Pick-up / Drop-off
<b>Use Case Description</b>	To confirm the assignment of a slot (detailed time and location) for the collection or delivery of goods.
<b>Actors (Goal)</b>	Slot Requestor (logistic service provider) Slot Provider (customer, supplier, consolidation centre, ...)
<b>Performance Goals</b>	Not applicable
<b>Preconditions</b>	The provider is aware that a shipment / consignment will need to be collected or delivered, based on previous information exchanges. Optional: the provider may have received a Transport Pick-up Drop-off Request
<b>Post conditions</b>	

<b>Scenario</b>	<p>Begins when the provider receives the transport pic-up drop-off request</p> <p>Continues with...</p> <table><tr><th>Step #</th><th>Actor</th><th>Activity Step</th></tr><tr><td>1</td><td>provider</td><td>Assigns a slot (time and location)</td></tr><tr><td>2</td><td>provider</td><td>Sends the confirmation</td></tr><tr><td>3</td><td>requestor</td><td>Receives the confirmation</td></tr></table> <p>Ends when</p>	Step #	Actor	Activity Step	1	provider	Assigns a slot (time and location)	2	provider	Sends the confirmation	3	requestor	Receives the confirmation
Step #	Actor	Activity Step											
1	provider	Assigns a slot (time and location)											
2	provider	Sends the confirmation											
3	requestor	Receives the confirmation											
<b>Alternative Scenario</b>	<p>Begins when the provider determines an update on the pick-up or drop-off slot is required.</p> <p>Continues with...</p> <table><tr><th>Step #</th><th>Actor</th><th>Activity Step</th></tr><tr><td>1</td><td>provider</td><td>Assigns a slot (time and location)</td></tr><tr><td>2</td><td>provider</td><td>Sends the confirmation</td></tr><tr><td>3</td><td>requestor</td><td>Receives the confirmation</td></tr></table>	Step #	Actor	Activity Step	1	provider	Assigns a slot (time and location)	2	provider	Sends the confirmation	3	requestor	Receives the confirmation
Step #	Actor	Activity Step											
1	provider	Assigns a slot (time and location)											
2	provider	Sends the confirmation											
3	requestor	Receives the confirmation											
<b>Related Requirements</b>	Not applicable												
<b>Related Rules</b>	Not applicable												

### Activity Diagram(s)

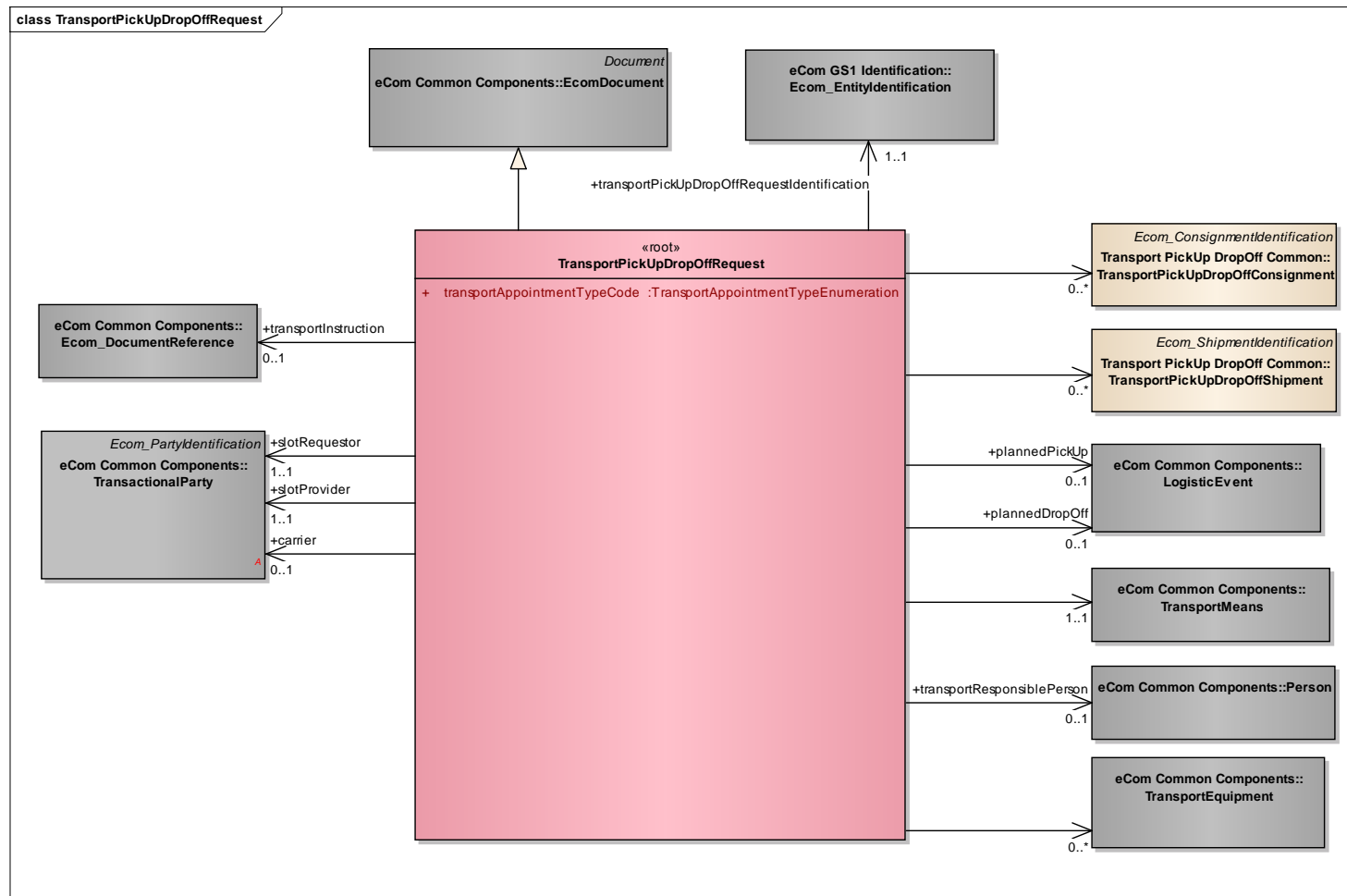
Not applicable



## 4 Business Information View

### 4.1 Transport Pick Up Drop Off Request (message)

#### Class diagram



## GDD report

The content of the TransportPickUpDropOffRequest class, its structure and component definitions can be accessed in the Global Data Dictionary:

[http://apps.gs1.org/GDD/bms/Version3\\_3/Pages/bieDetails.aspx?semanticURN=urn:gs1:gdd:bie:TransportPickUpDropOffRequest](http://apps.gs1.org/GDD/bms/Version3_3/Pages/bieDetails.aspx?semanticURN=urn:gs1:gdd:bie:TransportPickUpDropOffRequest)

Content	Attribute / Role	Datatype /Secondary class	Multiplicity	Definition	Requirements
TransportPickUpDropOffRequest				This business message standard enables the request for an appointment to collect goods at a pick-up location or to deliver goods at a drop-off location.	
Association	slotRequestor	TransactionalParty	1..1	The party that requests a pick-up or drop-off slot from another party.	BRAD TM - new requirement
Association	plannedPickUp	LogisticEvent	0..1	Details on the planned time and location the goods will be collected.	
Association	carrier	TransactionalParty	0..1	The party that will collect, transport and deliver the goods.	BRAD TM - TransportPUDORRequest-4
Association	slotProvider	TransactionalParty	1..1	The party that provides a pick-up or drop-off slot to another party.	BRAD TM - new requirement
Association		TransportPickUpDropOffShipment	0..*	Details of the shipment that will be collected or delivered.	
Generalization		EcomDocument		Basic information about the content of the message including version number, creation date and time.	BRAD TM - TransportPUDORRequest-2
Association	plannedDropOff	LogisticEvent	0..1	Details on the planned time and location the goods will be delivered.	
Association	transportInstruction	Ecom_DocumentReference	0..1	Reference to the transport instruction document related to this request.	BRAD TM - TransportPUDORRequest-3 WR 15-000314
Association		TransportPickUpDropOffConsignment	0..*	Details on the consignment that will be collected or delivered.	
Association		TransportEquipment	0..*	Details on the transport equipment used for the transport.	BRADTransportManagement -newrequirement
Association	transportResponsiblePerson	Person	0..1	The person responsible for the execution of this pick-up or drop-off, for example the driver.	BRAD TM - TransportPUDORRequest-4



#### Transport Pick up Drop off Request and Confirmation Business Message Standard (BMS)

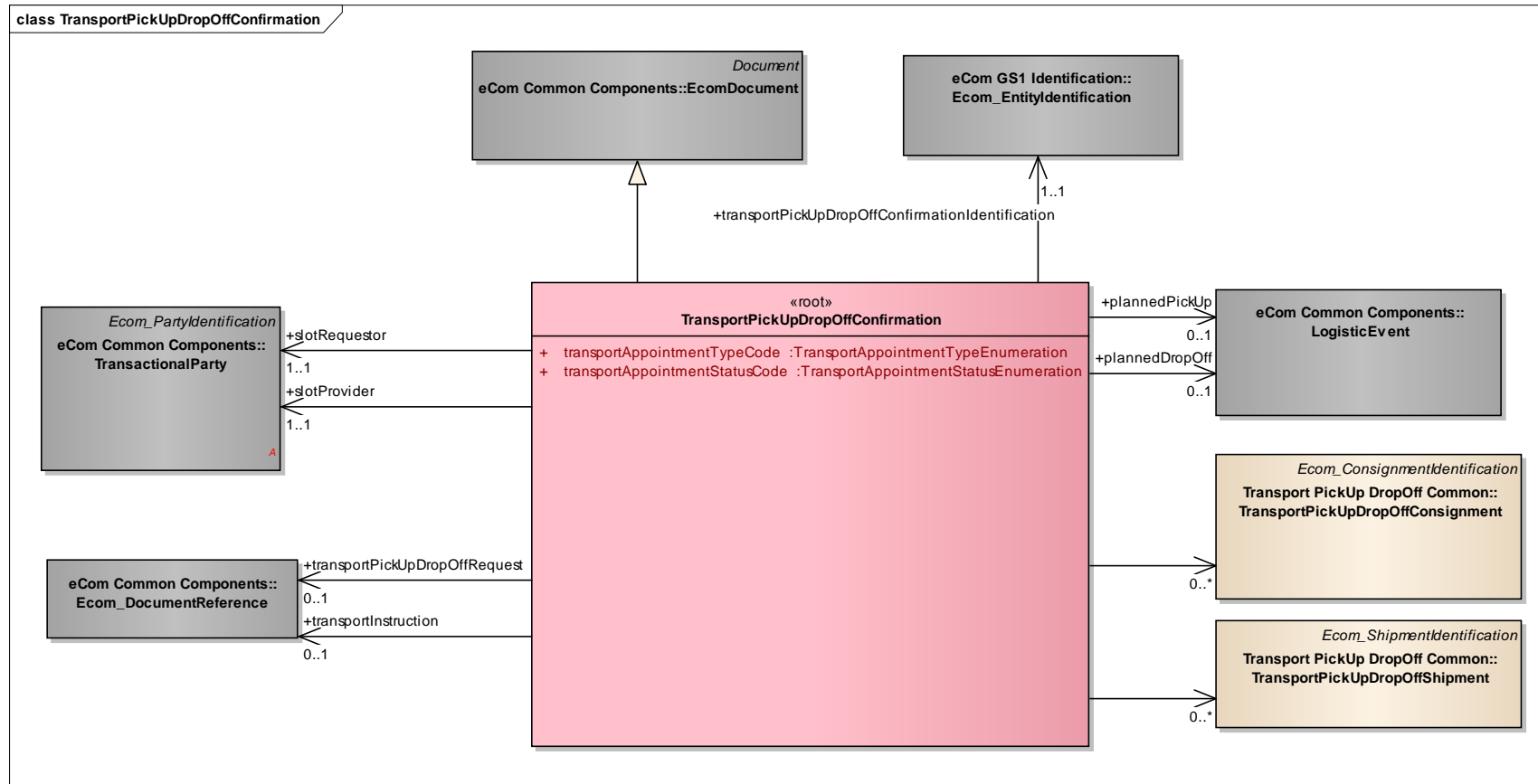
Content	Attribute / Role	Datatype /Secondary class	Multiplicity	Definition	Requirements
Association		TransportMeans	1..1	Details on the transport means used for the transport.	BRAD TM - TransportPUDORRequest-6
Association	transportPickUp DropOffRequest Identification	Ecom_EntityIdentification	1..1	The identification of the Transport Pick-up Drop-off Request document.	BRAD TM - TransportPUDORRequest-1 WR 15-000314
Attribute	transportAppointmentTypeCode	TransportAppointmentTypeEnumeration	1..1	Code specifying whether the request relates to a pick-up or drop-off.	



**Note:** Reference Shared Common Library Business Message (BMS) Release 3.3 and eCom Domain Common Library Business Message (BMS) Release 3.3 for all common information.

## 4.2 Transport Pick Up Drop Off Confirmation (message)

### Class Diagram



### GDD Report

The content of the TransportPickUpDropOffConfirmation class, its structure and component definitions can be accessed in the Global Data Dictionary: [http://apps.gs1.org/GDD/bms/Version3\\_3/Pages/bieDetails.aspx?semanticURN=urn:gs1:gdd:bie:TransportPickUpDropOffConfirmation](http://apps.gs1.org/GDD/bms/Version3_3/Pages/bieDetails.aspx?semanticURN=urn:gs1:gdd:bie:TransportPickUpDropOffConfirmation)

Content	Attribute / Role	Datatype /Secondary class	Multiplicity	Definition	Requirements
TransportPickUpDropOffConfirmation				This business message standard enables the confirmation of an appointment to collect goods at a pick-up location or to deliver goods at a drop-off location.	
Association	plannedDropOff	LogisticEvent	0..1	Details on the planned time and location the goods will be delivered.	BRAD TM - TransportPUDOCconfirmation-6
Association	transportPickUpDropOffConfirmationIdentification	Ecom_EntityIdentification	1..1	The identification of the Transport Pick-up Drop-off Request document.	BRAD TM - TransportPUDOCconfirmation-1 WR 15-000314
Generalization		EcomDocument		Basic information about the content of the message including version number, creation date and time.	BRAD TM - TransportPUDOCconfirmation-2
Association	transportInstruction	Ecom_DocumentReference	0..1	Reference to the Transport Instruction document related to this confirmation.	BRAD TM - TransportPUDOCconfirmation-4 WR 15-000314
Association	slotProvider	TransactionalParty	1..1	The party that provides a pick-up or drop-off slot to another party.	BRAD TM - TransportPUDOCconfirmation- new
Association		TransportPickUpDropOffShipment	0..*	Details on the shipment that will be collected or delivered.	BRAD TM - TransportPUDOCconfirmation-7
Association	plannedPickUp	LogisticEvent	0..1	Details on the planned time and location the goods will be collected.	BRAD TM - TransportPUDOCconfirmation-6
Association	transportPickUpDropOffRequest	Ecom_DocumentReference	0..1	Reference to the Transport Pick-up Drop-off Request document related to this request.	BRAD TM - TransportPUDOCconfirmation-3 WR 15-000314
Association		TransportPickUpDropOffConsignment	0..*	Details on the consignment that will be collected or delivered.	BRAD TM - TransportPUDOCconfirmation-7



#### Transport Pick up Drop off Request and Confirmation Business Message Standard (BMS)

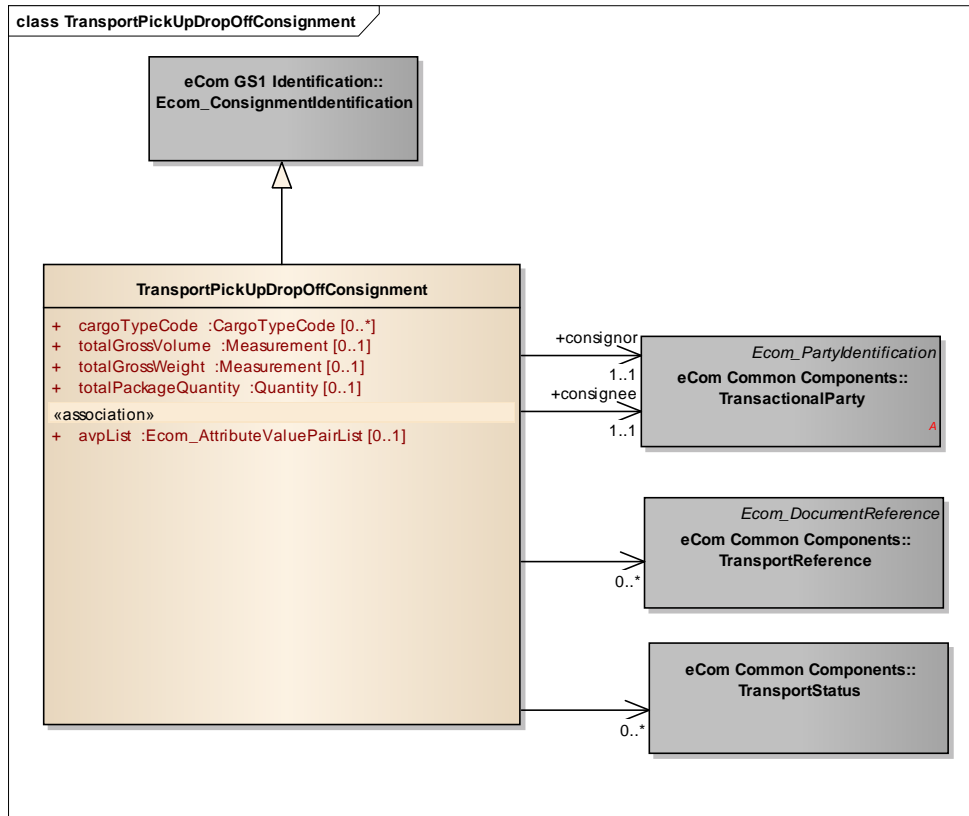
Content	Attribute / Role	Datatype /Secondary class	Multiplicity	Definition	Requirements
Association	slotRequestor	TransactionalParty	1..1	The party that requests a pick-up or drop-off slot from another party.	BRAD TM - TransportPUDOCconfirmation- new
Attribute	transportAppointmentTypeCode	TransportAppointmentTypeEnumeration	1..1	Code specifying whether the request relates to a pick-up or drop-off.	
Attribute	transportAppointmentStatusCode	TransportAppointmentStatusEnumeration	1..1	Code specifying the status of the confirmed appointment, for example UPDATED.	BRAD TM - TransportPUDOCconfirmation-5



**Note:** Reference Shared Common Library Business Message (BMS) Release 3.3 and eCom Domain Common Library Business Message (BMS) Release 3.3 for all common information.

## 4.3 Transport Pick Up Drop Off Consignment

### Class Diagram



### GDD Report

The content of the TransportPickUpDropOffConsignment class, its structure and component definitions can be accessed in the Global Data Dictionary:  
[http://apps.gs1.org/GDD/bms/Version3\\_3/Pages/bieDetails.aspx?semanticURN=urn:gs1:gdd:bie:TransportPickUpDropOffConsignment](http://apps.gs1.org/GDD/bms/Version3_3/Pages/bieDetails.aspx?semanticURN=urn:gs1:gdd:bie:TransportPickUpDropOffConsignment)

Content	Attribute / Role	Datatype /Secondary class	Multiplicity	Definition	Requirements
TransportPickUpDropOffConsignment				Details on the consignment that will be collected or delivered.	BRAD TM - TransportPUDORrequest -6

Content	Attribute / Role	Datatype /Secondary class	Multiplicity	Definition	Requirements
Association		TransportStatus	0..*	Details on the transport status of the consignment.	
Association	consignor	TransactionalParty	1..1	The party despatching a consignment of goods.	
Association		TransportReference	0..*	References to the commercial transaction or to transport or legal documents related to the consignment.	
Generalization		Ecom_ConsignmentIdentification		The unique identifier for this consignment.	WR 15-000314
Association	consignee	TransactionalParty	1..1	The party receiving a consignment of goods.	
Attribute	cargoTypeCode	CargoTypeCode	0..*	Code specifying the classification of a type of cargo for example hazardous cargo.	
Attribute	totalGrossVolume	Measurement	0..1	A measure of the volume, normally calculated by multiplying the maximum length, width, and height of the packaged goods.	
Attribute	totalGrossWeight	Measurement	0..1	A measure of the mass of the goods including the weight of transport packaging, and potentially the weight of any transport equipment.	
Attribute	totalPackageQuantity	Quantity	0..1	Total number of logistic units (e.g. pallets) in this transport cargo.	
Attribute	avpList	Ecom_AttributeValuePairList	0..1	Temporary attributes introduced between minor versions.	

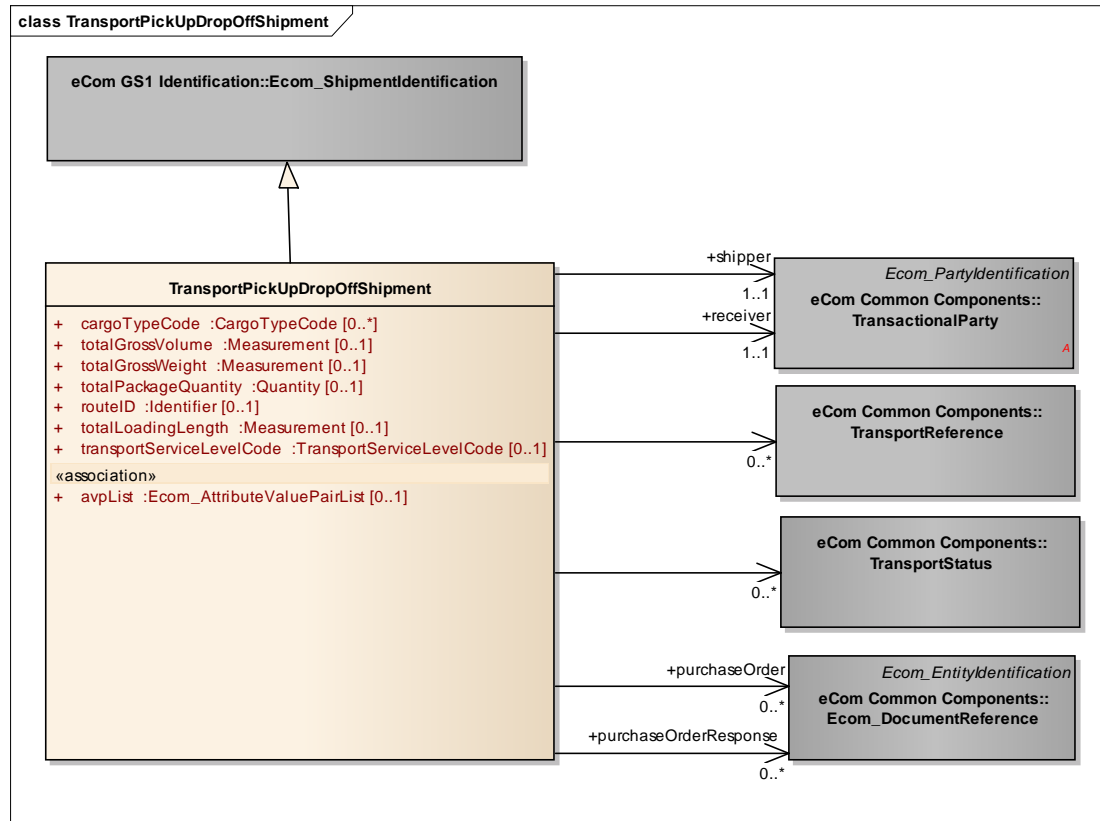


**Note:** Reference Shared Common Library Business Message (BMS) Release 3.3 and eCom Domain Common Library Business Message (BMS) Release 3.3 for all common information.



## 4.4 Transport Pick Up Drop Off Shipment

### Class Diagram



## GDD Report

The content of the TransportPickUpDropOffShipment class, its structure and component definitions can be accessed in the Global Data Dictionary: [http://apps.gs1.org/GDD/bms/Version3\\_3/Pages/bieDetails.aspx?semanticURN=urn:gs1:gdd:bie:TransportPickUpDropOffShipment](http://apps.gs1.org/GDD/bms/Version3_3/Pages/bieDetails.aspx?semanticURN=urn:gs1:gdd:bie:TransportPickUpDropOffShipment)

Content	Attribute / Role	Datatype /Secondary class	Multiplicity	Definition	Requirements
TransportPickUpDropOffShipment				Details on the shipment that will be collected or delivered.	BRAD TM - TransportPUDOR request-6
Association		TransportReference	0..*	References to the commercial transaction or to transport or legal documents related to the shipment.	
Association		TransportStatus	0..*	Details on the transport status of the shipment.	
Association	shipper	TransactionalParty	1..1	A party which engages in shipping this shipment of goods.	
Generalization		Ecom_ShipmentIdentification		The unique identifier for this shipment.	WR 15-000314
Association	receiver	TransactionalParty	1..1	A party which engages in receiving this shipment of goods.	
Attribute	cargoTypeCode	CargoTypeCode	0..*	Code specifying the classification of a type of cargo for example hazardous cargo.	
Attribute	totalGrossVolume	Measurement	0..1	A measure of the volume, normally calculated by multiplying the maximum length, width, and height of the packaged goods.	
Attribute	totalGrossWeight	Measurement	0..1	A measure of the mass of the goods including the weight of transport packaging, and potentially the weight of any transport equipment.	
Attribute	totalPackageQuantity	Quantity	0..1	Total number of logistic units (e.g. pallets) in this transport cargo.	
Attribute	avpList	Ecom_AttributeValuePairList	0..1	Temporary attributes introduced between minor versions.	
Attribute	routeID	Identifier	0..1	Unique identifier of the standard route that will be used for this shipment.	WR 16-000226
Attribute	totalLoadingLength	Measurement	0..1	Measure of the total length the goods occupy in a transport means / on a piece of transport equipment. E.g. Loading meters in a truck or trailer	WR 16-000226



#### Transport Pick up Drop off Request and Confirmation Business Message Standard (BMS)

Content	Attribute / Role	Datatype /Secondary class	Multiplicity	Definition	Requirements
Attribute	transportServiceLevelCode	TransportServiceLevelCode	0..1	Code specifying the service level requested for the transport service. For example: Express service	WR 16-000226
Association	purchaseOrder	Ecom_DocumentReference	0..*	Provides reference to the Purchase Order document(s) fulfilled with this shipment.	WR 16-000226
Association	purchaseOrderResponse	Ecom_DocumentReference	0..*	Provides reference to the Purchase Order Response documents, responding to the Purchase order document(s) fulfilled with this shipment.	WR 16-00226



**Note:** Reference Shared Common Library Business Message (BMS) Release 3.3 and eCom Domain Common Library Business Message (BMS) Release 3.3 for all common information.

## 4.5 Enumerations (message specific)

### 4.5.1 TransportAppointmentTypeEnumeration

Code	Code Description
PICK_UP	The appointment is for the pick-up of goods.
DROP_OFF	The appointment is for the drop-off of goods.

### 4.5.2 TransportAppointmentStatusEnumeration

Code	Code Description
CONFIRMED	Confirmation of the pick-up / drop-off slot requested in the Transport Pick-up Drop-off Request.
UPDATED	Update of the pick-up / drop-off slot requested in the Transport Pick-up Drop-off Request.
ALLOCATED	Allocation of a pick-up / drop-off slot without prior request.

## 4.6 Code Lists

Class	Codelist	GDD Link
TransportPickUpDropOffShip ment TransportPickUpDropOffCons ignment	CargoTypeC ode	<a href="http://apps.gs1.org/GDD/Pages/clDetails.aspx?semanticURN=urn:gs1:gd:d:cl:CargoTypeCode">http://apps.gs1.org/GDD/Pages/clDetails.aspx?semanticURN=urn:gs1:gd:d:cl:CargoTypeCode</a>



**Note:** Refer to the Global Data Dictionary (GDD) for the code values.



## 5 Business Message Examples

### 5.1 Example 1

This is an example of the Transport Pick Up Drop Off Request message used as a Pick-Up Request for a Consignment.

#### Party Information

GS1 Global Location Number	Party Type
7365566156190	Slot Provider
4048623000003	Slot Requestor
7365566156190	Consignor
7300011234566	Consignee

#### Message Example 1

Attribute	Value
<b>TransportPickUpDropOffRequest</b>	
creationDateTime	2011-01-12T12:00:00
documentStatusCode	ORIGINAL
transportAppointmentTypeCode	PICK_UP
<b>EntityIdentification (+transportPickUpDropOffRequestIdentification)</b>	
uniqueCreatorIdentification	PUDOR00001
<b>TransportPickUpDropOffConsignment</b>	
ginc	7365566156191234567
<b>TransactionalParty (+consignor)</b>	
gln	7365566156190
<b>TransactionalParty (+consignee)</b>	
gln	7300011234566
<b>LogisticEvent (+plannedPickUp)</b>	
<b>DateOptionalTime (+logisticEventDateTime)</b>	
date	2009-01-13
time	09:00:00
<b>TransportMeans</b>	
transportMeansType	31
transportMeansID	TF-69-XX
<b>TransportEquipment</b>	
transportEquipmentTypeCode	14
<b>ReturnableAssetIdentification (+individualReturnableAssetIdentification)</b>	
grai	000000000000000
additionalReturnableAssetIdentification; additionalReturnableAssetIdentificationTypeCode	TRL-ABC-912; OWNER_ASSIGNED
<b>TransactionalParty (+slotRequestor)</b>	
gln	4048623000003



Attribute	Value
<b><i>TransactionalParty (+slotProvider)</i></b>	
gln	7365566156190

## 5.2 Example 2

This is an example of the Transport Pick Up Drop Off Request message used as a Pick-Up Confirmation for a Consignment.

### Message Example 2

Attribute	Value
<b>TransportPickUpDropOffConfirmation</b>	
creationDateTime	2011-01-12T12:00:00
documentStatusCode	ORIGINAL
transportAppointmentTypeCode	PICK_UP
transportAppointmentStatusCode	CONFIRMED
<b>EntityIdentification (+transportPickUpDropOffConfirmationIdentification)</b>	
uniqueCreatorIdentification	PUDOC00001
<b>LogisticEvent (+plannedPickUp)</b>	
<b>DateOptionalTime (+logisticEventDateTime)</b>	
date	2009-01-13
time	09:00:00
<b>LogisticLocation</b>	
gln	7365566156190
subLocationIdentification	Dockdoor-23
<b>TransportPickUpDropOffConsignment</b>	
ginc	7365566156191234567
<b>TransactionalParty (+consignor)</b>	
gln	7365566156190
<b>TransactionalParty (+consignee)</b>	
gln	7300011234566
<b>TransactionalParty (+slotRequestor)</b>	
gln	4048623000003
<b>TransactionalParty (+slotProvider)</b>	
gln	7365566156190
<b>DocumentReference (+transportPickUpDropOffRequest)</b>	
uniqueCreatorIdentification	PUDOR00001

## 6 Implementation Considerations

### 6.1 User Guide

The Functional User Guide contains more information about the structure and content of the Transport Pick up Drop off Request and Confirmation message:

[http://www.gs1.org/docs/ecom/xml/3/3.3/eCom-Trade\\_messages.html#TransportPickupDropoffRequestandConfirmation](http://www.gs1.org/docs/ecom/xml/3/3.3/eCom-Trade_messages.html#TransportPickupDropoffRequestandConfirmation)

## 6.2 Message Specific Considerations

Not Applicable

## 7 Summary of Changes

Any change in the GS1 standards is done based on the Work Request (WR) submitted by the GS1 User Companies or Member Organisations. All Work Requests are documented in the Work Request system available on the GS1 website: <http://wr.gs1.org>. The system is accessible to registered users. New visitors need to register first, to be able to access it. WRs can be searched by the number referenced in tables below, see: Search Work Requests. The number starts with the two last digits of the year when it was submitted, followed by the consecutive number within that year.



**Note:** WRs submitted earlier than February 2012 should be searched in Old Change Requests.

### 7.1 BMS Release 3.0

First publication

### 7.2 BMS Release 3.1

Change	Associated CR
<ul style="list-style-type: none"> <li>TransportPickUpDropOffRequest: changed cardinality of association to Consignment from 0..1 to 0..*</li> <li>TransportPickUpDropOffConfirmation: changed cardinality of association to Consignment from 0..1 to 0..*</li> </ul>	<b>12-000195</b>

### 7.3 BMS Release 3.2

Change	Associated WR
<div> <div>class TransportPickUpDropOffRequest - maintenance view</div> <div> <div>«root»</div> <div>TransportPickUpDropOffRequest</div> <div> + transportAppointmentTypeCode: TransportAppointmentTypeEnumeration </div> <div> maintenance </div> <div> Change: (Complete) 3.1 changed cardinality of association to Consignment from 0..1 into 0..* (WR 12-195)  Change: (Verified) 3.2 changed generalisation from Document to eComDocument class to include AVP (WR 14-110) </div> </div> </div>	<b>14-000110</b> Add Attribute Value Pair at the root, line item and sub line item levels



Change	Associated WR
<p>class TransportPickUpDropOffConfirmation - maintenance view</p> <div> <p>«root»</p> <p><b>TransportPickUpDropOffConfirmation</b></p> <p>+ transportAppointmentTypeCode: TransportAppointmentTypeEnumeration</p> <p>+ transportAppointmentStatusCode: TransportAppointmentStatusEnumeration</p> <p><i>maintenance</i></p> <p>Change: (Complete) 3.1 changed cardinality of association to Consignment from 0..1 into 0..* (WR 12-195)</p> <p>Change: (Verified) 3.2 changed generalisation from Document to eComDocument class to include AVP (WR 14-110)</p> </div>	<p><b>14-000110</b></p> <p>Add Attribute Value Pair at the root, line item and sub line item levels</p>
<p>class TransportPickUpDropOffConsignment - mainte...</p> <div> <p><b>TransportPickUpDropOffConsignment</b></p> <p>+ cargoTypeCode: CargoTypeCode [0..*]</p> <p>+ totalGrossVolume: Measurement [0..1]</p> <p>+ totalGrossWeight: Measurement [0..1]</p> <p>+ totalPackageQuantity: Quantity [0..1]</p> <p>«association»</p> <p>+ avpList: Ecom_AttributeValuePairList [0..1]</p> <p><i>maintenance</i></p> <p>Change: (Verified) 3.2 added +avpList (WR 14-110)</p> </div>	<p><b>14-000110</b></p> <p>Add Attribute Value Pair at the root, line item and sub line item levels</p>

Change	Associated WR
<p><b>class TransportPickUpDropOffShipment - mainten...</b></p> <pre> classDiagram     class TransportPickUpDropOffShipment {         + cargoTypeCode: CargoTypeCode [0..*]         + totalGrossVolume: Measurement [0..1]         + totalGrossWeight: Measurement [0..1]         + totalPackageQuantity: Quantity [0..1]         «association»         + avpList: Ecom_AttributeValuePairList [0..1]     }     class maintenance {         Change: (Verified) 3.2 added +avpList (WR 14-110)     }     </pre>	<p><b>14-000110</b></p> <p>Add Attribute Value Pair at the root, line item and sub line item levels</p>

## 7.4 BMS Release 3.3

Change	Associated WR
<p>Created Ecom_EntityIdentification class and changed association from the previous EntityIdentification</p> <p><b>class TransportPickUpDropOffRequest - maintenance view</b></p> <pre> classDiagram     class eCom_GS1_Identification {         &lt;&lt;Ecom_EntityIdentification&gt;&gt;         maintenance         Change: (New) 3.3 New class (WR 15-314)     }     class TransportPickUpDropOffRequest {         «root»         + transportAppointmentTypeCode :TransportAppointmentTypeEnumeration         maintenance         Change: (Complete) 3.1 changed cardinality of association to Consignment from 0..1 into 0..* (WR 12-195)         Change: (Complete) 3.2 changed generalisation from Document to eComDocument class to include AVP (WR 14-110)         Change: (New) 3.3 changed association from EntityIdentification to Ecom_EntityIdentification (WR 15-314)         Change: (New) 3.3 changed association named +transportInstruction from DocumentReference to Ecom_DocumentReference (WR 15-314)     }     eCom_GS1_Identification "1..1" --&gt; "1" TransportPickUpDropOffRequest : +transportPickUpDropOffRequestIdentification     </pre>	<p><b>15-000314</b></p> <p>Make GS1 identification keys optional in GS1 EDI XML</p>
<p>Created Ecom_DocumentReference class and changed association from the previous DocumentReference</p> <p><b>class TransportPickUpDropOffRequest - maintenance view</b></p> <pre> classDiagram     class eCom_Common_Components {         &lt;&lt;Ecom_DocumentReference&gt;&gt;         maintenance         Change: (New) 3.3 added +referenceDocumentUri (WR 16-251)         Change: (New) 3.3 New class (WR 15-314)     }     class TransportPickUpDropOffRequest {         «root»         + transportAppointmentTypeCode :TransportAppointmentTypeEnumeration         maintenance         Change: (Complete) 3.1 changed cardinality of association to Consignment from 0..1 into 0..* (WR 12-195)         Change: (Complete) 3.2 changed generalisation from Document to eComDocument class to include AVP (WR 14-110)         Change: (New) 3.3 changed association from EntityIdentification to Ecom_EntityIdentification (WR 15-314)         Change: (New) 3.3 changed association named +transportInstruction from DocumentReference to Ecom_DocumentReference (WR 15-314)     }     eCom_Common_Components "0..1" --&gt; "1" TransportPickUpDropOffRequest : +transportInstruction     </pre>	<p><b>15-000314</b></p> <p>Make GS1 identification keys optional in GS1 EDI XML</p>

Change	Associated WR
<p>Created Ecom_EntityIdentification class and changed association from the previous EntityIdentification</p>	<p><b>15-000314</b> Make GS1 identification keys optional in GS1 EDI XML</p>
<p>Created Ecom_DocumentReference class and changed association from the previous DocumentReference</p>	<p><b>15-000314</b> Make GS1 identification keys optional in GS1 EDI XML</p>
<p>Created Ecom_ConsignmentIdentification class and changed association from the previous ConsignmentIdentification</p>	<p><b>15-000314</b> Make GS1 identification keys optional in GS1 EDI XML</p>

Change	Associated WR
<p>Added (WR 16-226):</p> <ul style="list-style-type: none"> <li>routeID</li> <li>totalLoadingLength</li> <li>transportServiceLevel</li> </ul> <div> <p>class TransportPickUpDropOffShipment - maintenance view</p> <pre> class TransportPickUpDropOffShipment + cargoTypeCode :CargoTypeCode [0..*] + totalGrossVolume :Measurement [0..1] + totalGrossWeight :Measurement [0..1] + totalPackageQuantity :Quantity [0..1] + routeID :Identifier [0..1] + totalLoadingLength :Measurement [0..1] + transportServiceLevelCode :TransportServiceLevelCode [0..1] «association» + avpList :Ecom_AttributeValuePairList [0..1]  maintenance Change: (Complete) 3.2 added +avpList (WR 14-110) Change: (New) 3.3 added +routeID (WR 16-226) Change: (New) 3.3 added +totalLoadingLength (WR 16-226) Change: (New) 3.3 added +transportServiceLevel (WR 16-226) Change: (New) 3.3 added association to Ecom_DocumentReference named +purchaseOrder (WR 16-226) Change: (New) 3.3 added association to Ecom_DocumentReference named +purchaseOrderResponse (WR 16-226) Change: (New) 3.3 changed association from ShipmentIdentification to Ecom_ShipmentIdentification (WR 15-314) </pre> </div>	<p><b>16-000226</b></p> <p>Add the following:</p> <ul style="list-style-type: none"> <li>Route ID</li> <li>Loading metres</li> <li>code list with chartering, courier and express values</li> </ul>
<p>Created Ecom_ShipmentIdentification class and changed association and generalisation from the previous ShipmentIdentification</p> <div> <p>class TransportPickUpDropOffShipment - maintenance view</p> <pre> class eCom GS1 Identification::Ecom_ShipmentIdentification maintenance Change: (New) 3.3 New class (WR 15-314)  class TransportPickUpDropOffShipment + cargoTypeCode :CargoTypeCode [0..*] + totalGrossVolume :Measurement [0..1] + totalGrossWeight :Measurement [0..1] + totalPackageQuantity :Quantity [0..1] + routeID :Identifier [0..1] + totalLoadingLength :Measurement [0..1] + transportServiceLevelCode :TransportServiceLevelCode [0..1] «association» + avpList :Ecom_AttributeValuePairList [0..1]  maintenance Change: (Complete) 3.2 added +avpList (WR 14-110) Change: (New) 3.3 added +routeID (WR 16-226) Change: (New) 3.3 added +totalLoadingLength (WR 16-226) Change: (New) 3.3 added +transportServiceLevel (WR 16-226) Change: (New) 3.3 added association to Ecom_DocumentReference named +purchaseOrder (WR 16-226) Change: (New) 3.3 added association to Ecom_DocumentReference named +purchaseOrderResponse (WR 16-226) Change: (New) 3.3 changed association from ShipmentIdentification to Ecom_ShipmentIdentification (WR 15-314) </pre> </div>	<p><b>15-000314</b></p> <p>Make GS1 identification keys optional in GS1 EDI XML</p>

Change	Associated WR
<p>Added associations to Ecom_DocumentReference named (WR 16-226):</p> <ul style="list-style-type: none"> <li>purchaseOrder</li> <li>purchaseOrderResponse</li> </ul> <pre> class TransportPickUpDropOffShipment - maintenance view     class TransportPickUpDropOffShipment         + cargoTypeCode :CargoTypeCode [0..1]         + totalGrossVolume :Measurement [0..1]         + totalGrossWeight :Measurement [0..1]         + totalPackageQuantity :Quantity [0..1]         + routeID :Identifier [0..1]         + totalLoadingLength :Measurement [0..1]         + transportServiceLevelCode :TransportServiceLevelCode [0..1]         + association *         + avpList :Ecom_AttributeValuePairList [0..1]     maintenance     Change: (Complete) 3.2 added +avpList (WR 14-110)     Change: (New) 3.3 added +routeID (WR 16-226)     Change: (New) 3.3 added +totalLoadingLength (WR 16-226)     Change: (New) 3.3 added +transportServiceLevel (WR 16-226)     Change: (New) 3.3 added association to Ecom_DocumentReference named +purchaseOrder (WR 16-226)     Change: (New) 3.3 added association to Ecom_DocumentReference named +purchaseOrderResponse (WR 16-226)     Change: (New) 3.3 changed association from ShipmentIdentification to Ecom_ShipmentIdentification (WR 15-314)     </pre>	<p><b>16-000226</b></p> <p>Add:</p> <ul style="list-style-type: none"> <li>reference to Order</li> <li>reference to Order Response</li> </ul>

## 8 Appendices

Not Applicable

## 9 Acknowledgements

### 9.1.1 Work Group

Function	Name	Company / organisation
Co-chair	Rossner (Pottier), Natascha	GS1 France
Co-chair	Schmidt, Tom Eric	August Storck KG
Member	Bemrose, Jonathan	R&R Ice Cream
Member	Bodemer, Petra	dm-drogerie markt GmbH + Co. KG
Member	Boikanyo, Rebhone	GS1 South Africa / Consumer Goods Council of South Africa
Member	Canada, ON	M3B 3L1
Member	Carlson, Jim	General Mills, Inc.
Member	Chresta, Richard	GS1 Switzerland
Member	Cook, Don	Wal-Mart Stores, Inc.
Member	Cox, Marc	Philips Electronics N.V.
Member	Darnell, David	Systrends
Member	De Flou, Nele	GS1 Belgium & Luxembourg
Member	Dicks, Arne	GS1 Germany
Member	Duvinger, Karina	GS1 Sweden
Member	Foerderer, Klaus	GS1 Germany
Member	Gathmann, Stefan	GS1 Ireland
Member	Grangard, Anders	GS1 Global Office
Member	Harpell, Eileen	GS1 Community Room Staff
Member	Hand, Phil	JDA Software
Member	Herregodts, Kurt	GS1 Belgium & Luxembourg

Function	Name	Company / organisation
Member	Kempkes, Fred	Unilever N.V.
Member	Kernan, Brendan	GS1 Ireland
Member	Kidd, Robin	Nestle
Member	Krid, Anne-Claire	GS1 France
Member	Lanoue, Tom	General Mills, Inc.
Member	Laur, Rita	GS1 Canada
Member	Lenman, Mia	GS1 Sweden
Member	Lerch, Hanjoerg	METRO Group
Member	Moberg, Dale	Axway
Member	Montes de Oca, Alejandra	GS1 Mexico
Member	Ng, Ella	GS1 Australia
Member	Peelen, Esther	GS1 Netherlands
Member	Pelekies, Andreas	GS1 Germany
Member	Perrier, Patricia	GS1 France
Member	Przybilla, Christian	GS1 Germany
Member	Pujol, Xavier	GS1 Spain
Member	Racek, Greg	Wal-Mart Stores, Inc.
Member	Repetto, Mirko	GS1 Italy
Member	Robba, Steven	1WorldSync Holdings, Inc.
Member	Rosell, Pere	GS1 Spain
Member	Rosenberg, Steven	GS1 US
Member	Schmid, Sue	GS1 Australia
Member	Schneider, Christian	GS1 Switzerland
Member	Sehorz, Eugen	GS1 Austria
Member	Sharma, Vishal	General Mills, Inc.
Member	Shimazaki, Ayako	GS1 Japan
Member	Sion, Emilie	GS1 France
Member	Souza, Nadia	GS1 Brasil
Member	Strand, Roman	GS1 Germany
Member	Tan, Milton	GS1 Malaysia
Member	Tompsett, Simon	Waitrose
Member	Trelle, Ute	1WorldSync Holdings, Inc.
Member	Tse, Steve	GS1 Hong Kong
Member	Tyson, Betty	Knouse Foods Cooperative, Inc
Member	Van den Bergh, Senne	GS1 Belgium & Luxembourg
Member	Van der Eijk, Pim	OASIS - Sonnenglanz Consulting BV
Member	Veldhuis, Saskia	Procter & Gamble Co.
Member	Welch, Shan	GS1 UK
Member	Westerkamp, Jan	GS1 Netherlands
Member	Wilson, Mary	GS1 US

Function	Name	Company / organisation
Member	Windsperger, Bekki	Best Buy Co., Inc.
Member	Yang, Shaopeng	GS1 China
Member	Yusdiar, Dani	GS1 Indonesia
Member	Zwanziger, Greg	SUPERVALU

### 9.1.2 Development Team Members

Function	Name	Organisation
GSMP Process Lead	Jean-Luc Champion	GS1 Global Office
Technical Development Lead	Ewa Iwicka	GS1 Global Office
Peer Review	Mark Van Eeghem	GS1 Global Office